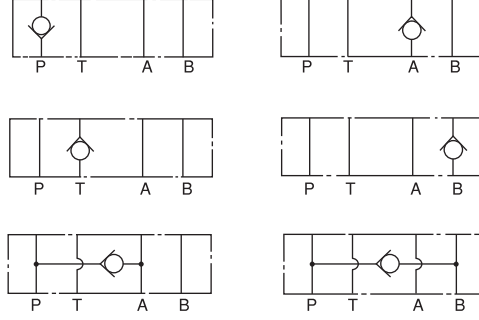


MODÜLER ÇEKVALFLER / MODULAR CHECK VALVES

MC -02



SEMBOLLER / SYMBOLS



TEKNİK BİLGİ / TECHNICAL DATA

MAKSİMUM ÇALIŞMA BASINCI MAX. OPERATING PRESSURE KGF/CM2 (PSI)	MAKSİMUM DEBİ MAXIMUM FLOW LPM (GPM)	AÇMA BASINCI CRACKING PRESSURE KGF/CM2 (PSI)	AĞIRLIK WEIGHT KGS
250 (3600)	40 (10.6)	0.5 (7) & 3.5 (50)	1.15 KGS

SİPARİŞ KODU / ORDERING CODE

MC -- 02 -- P -- 05 -- 50

DİZAYN NUMARASI / DESIGN NUMBER

AÇMA BASINCI / CRACKING PRESSURE:
05: 0.5 KGF/CM2 (7 PSI)
50: 3.5 KGF/CM2 (50 PSI)

İŞ YAPACAK DELİKLER / FUNCTION PORT

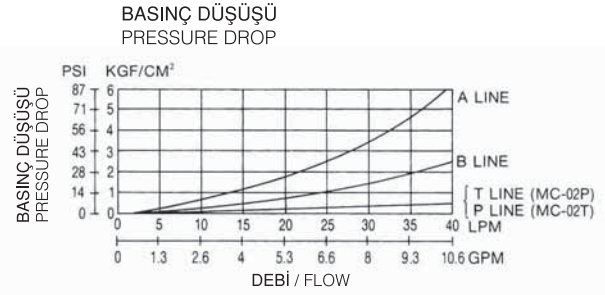
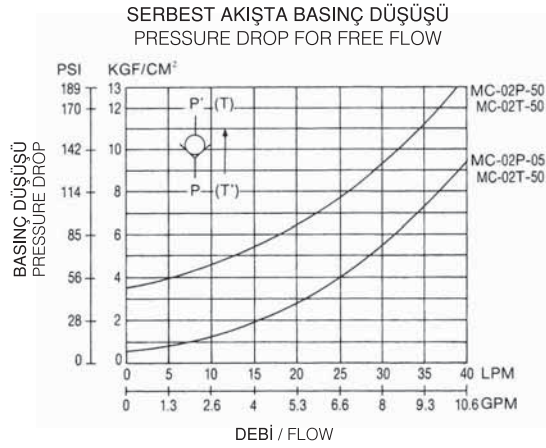
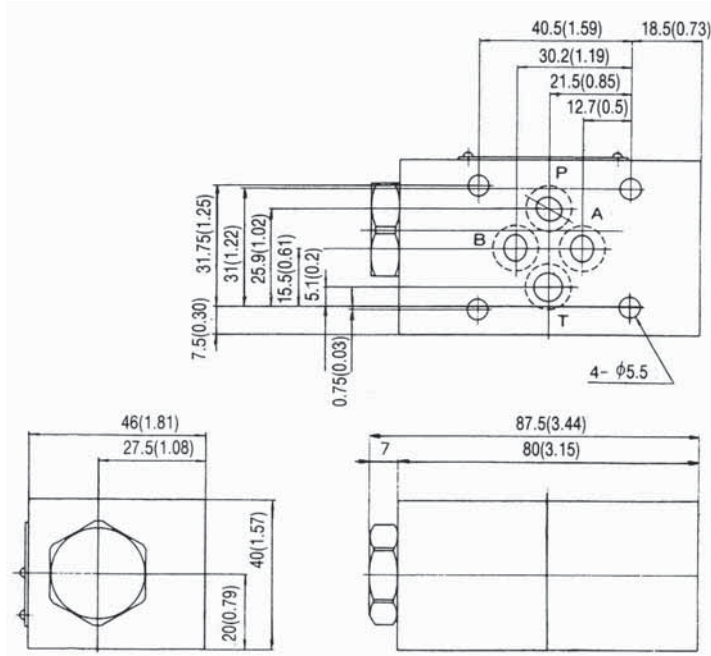
P: P DELİĞİ / P PORT
T: T DELİĞİ / T PORT
A: A DELİĞİ / A PORT
B: B DELİĞİ / B PORT
PA: A ->P
PB: B ->P

DELİK ÖLÇÜSÜ / PORT SIZE
02: 1/4"

ÇEK VALFLER
CHECK VALVES

MC -02 SERİLERİ / MC - 02 SERIES**ÇALIŞMA EĞRİLERİ / PERFORMANCE CURVES****MC - 02 P, T, A & B**

YAĞ ÇALIŞMA ÖLÇÜSÜ / MEASURED AT V= 35 CST AND T= 50°C

MC - 02 PA & PB**ÖLÇÜLER / DIMENSIONS****MC - 02P**BİRİM / UNIT: MM(INCH)
AĞIRLIK / WEIGHT : 1.15 KGS

MODÜLER ÇEKVALFLER / MODULAR CHECK VALVES

MC - 03

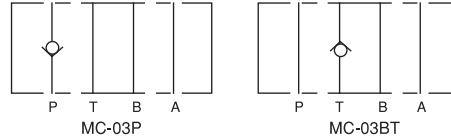


TEKNİK ÖZELLİKLER / TECHNICAL DATA

MAKSİMUM ÇALIŞMA BASINCI
MAX. OPERATING PRESSURE:
250 KGF/CM² (3600 PSI)

MAKSİMUM DEBİ / MAX. FLOW:
70 LPM (18.5 GPM)

SEMBOLLER / SYMBOLS



SİPARİŞ KODU / ORDERING CODE

MC -- 03 -- P -- 05 -- 50

DİZAYN NUMARASI / DESIGN NUMBER

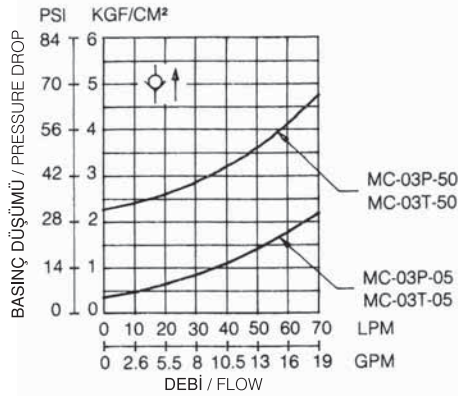
AÇMA BASINCI / CRACKING PRESSURE:
05: 0.5 KGF/CM² (7 PSI)
50: 3.5 KGF/CM² (50 PSI)

İŞ YAPACAK DELİKLER / FUNCTION PORT:
P: P DELİĞİ / P PORT
T: T DELİĞİ / T PORT

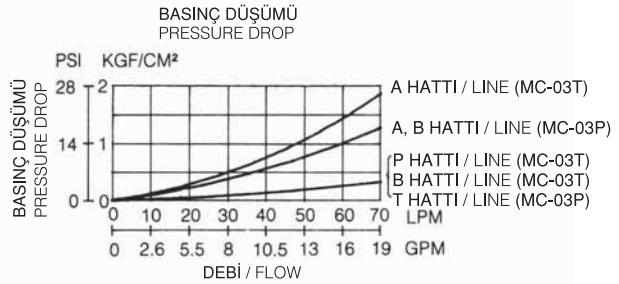
DELİK ÖLÇÜSÜ / PORT SIZE
03: 3/8"

PERFORMANS EĞRİLERİ / PERFORMANCE CURVES

MC - 03 P/T SERBEST AKIŞ İÇİN BASINÇ DÜŞÜŞÜ PRESSURE DROP FOR FREE FLOW

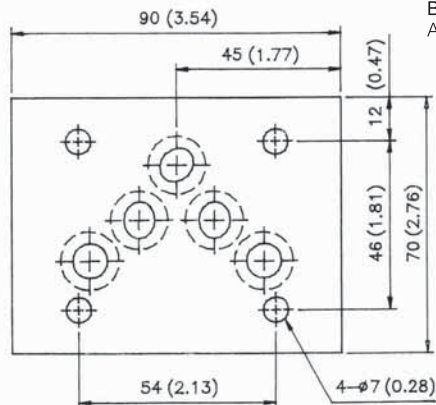
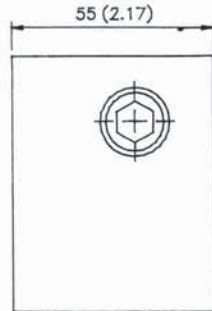


YAĞ ÇALIŞMA ÖLÇÜSÜ / MEASURED AT V= 35 CST AND T= 50 °C



ÖLÇÜLER / DIMENSIONS

MC - 03 P/T



BİRİM / UNIT: MM (INCH)
AĞIRLIK / WEIGHT : 2.4 KGS